



CONTEMPORARY DRINKING FOUNTAINS

INSTALLATION/MAINTENANCE INSTRUCTIONS

INSTALLATION INSTRUCTIONS FOR GRT75-PF-RFS PET FOUNTAIN

Important: Read all instructions and refer to local codes prior to installation.

- Local soil conditions may require more gravel for drainage.
- It is recommended to include a supply stop appropriately located on the supply line.
- An in-line PRV installed on the supply line is recommended to ensure a working water pressure of 40-60 psi.
- A water filter should be installed on the supply line if sediment or mineral content is a problem.
- Provide 30" x 30" x 6" deep concrete pad minimum.

Prepare trench for water supply line and waste line (if required). At fountain location prepare hole to trench depth and large enough for a person to work. Lay supply and waste into trench allowing extra length to be trimmed during hook-up.

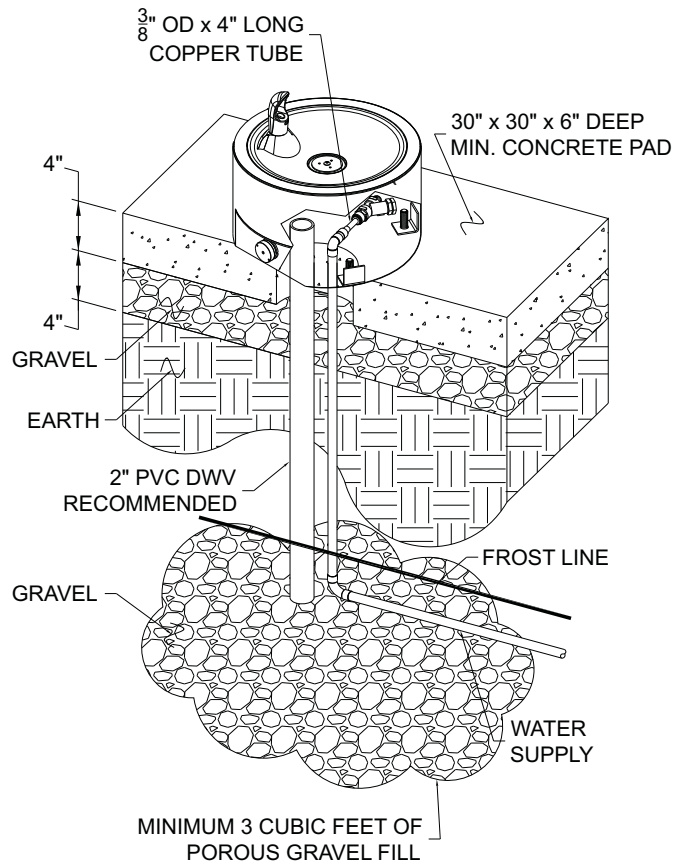
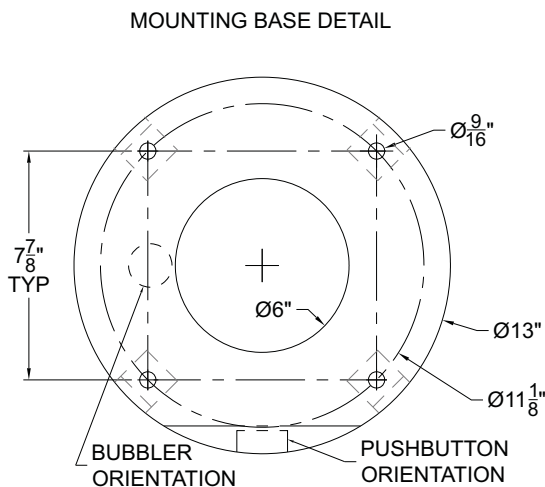
Depending on code and design requirements, drain may be open, French or sanitary connection. For French drain, place a minimum of three cubic feet of gravel under drain opening. Local soil conditions may require more gravel drainage.

Refill trench and hole, compacting back fill as required. Leave sufficient depth in hole to accommodate concrete pour.

Prepare the slab area surrounding fountain spreading and compacting gravel as necessary. Prepare form approximately 6" diameter to protect supply and waste stub outs.

If required, fix 1/4"-20 UNC L-bolt anchors by others in position arranging L-bolts according to pattern indicated and pour concrete to grade. Leave enough thread for mounting base. Ensure concrete top surface is flat and level. If concrete has cured use appropriate 1/2" concrete anchoring hardware by others following the manufacturer's installation recommendations.

For freeze resistant option refer to -FRU manual #9938-340-0M1.



Valve Specifications:

Minimum/Maximum Pressure:
30/100 PSI

Please visit www.murdock.com for most current specifications.



CONTEMPORARY DRINKING FOUNTAINS

INSTALLATION/MAINTENANCE INSTRUCTIONS

Allow concrete to cure before completing installation.

Remove basin from pedestal and set aside. Align anchoring studs to pedestal mounting holes and secure pedestal to slab. To ensure plumb installation, lay a bubble level on fountain bowl and adjust using shims or washers until unit is level.

Make up connections to 3/8" OD (1/4" nominal) x 4" long copper tube with inline Y-strainer. Make up waste connection to 1-1/4" OD tailpiece provided.

Turn on water supply and test operation of bubbler by depressing button and adjust flow rate as required. Check all connections for leaks.

Turn on water supply and test for proper operation and checking for leaks.

FYI: Protect exposed valve assembly, tubing and tube openings to prevent damage to equipment or to prevent tubes from becoming filled with soil or debris.

Rough-in water supply for 3/8" OD (1/4" nominal) x 4" long copper tube connected to inline Y-strainer inlet provided. A supply stop by others is recommended.

Test operation of bubbler by depressing button and adjust flow rate as required. Check all connections for leaks.

All normal maintenance is done from above ground.

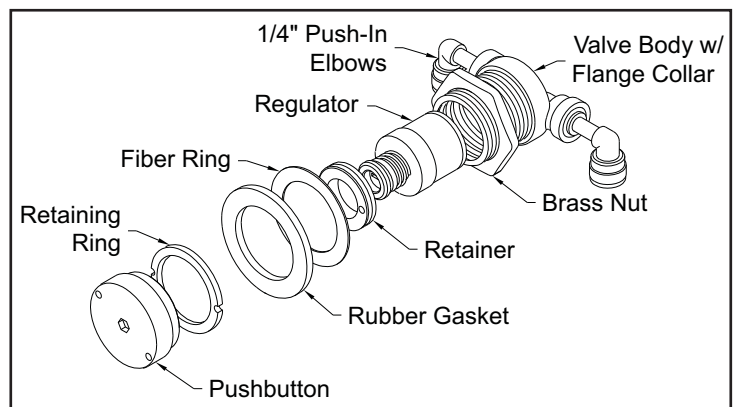
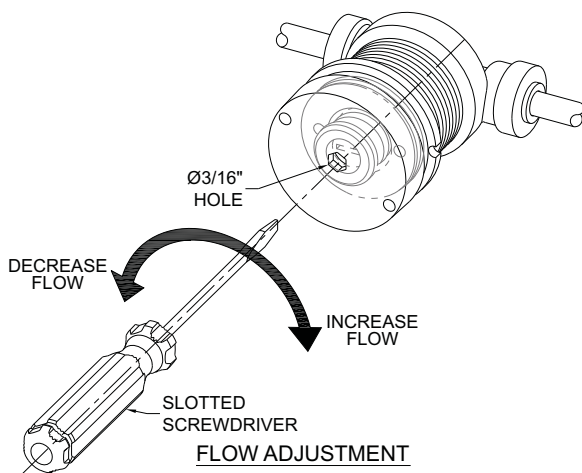
❖ Always shut off water supply when doing any maintenance.

❖ **To remove pushbutton assembly** remove bowl from housing. From inside of the housing, remove inlet and outlet lines from push-in ports of valve body. Using a spanner wrench remove pushbutton and retaining ring.

❖ **To replace regulator**, use a spanner wrench to remove pushbutton and retaining ring from the flange collar. Use a spanner wrench to remove retainer from the inside of the flange collar. Remove regulator, insert new regulator and align ports to new regulator with mating ports of valve body then replace retaining ring.

❖ **To access bubbler**, remove bowl from housing assembly. Remove bubbler plug with a spanner wrench and remove nut holding bubbler in place.

❖ **Re-assemble in reverse order.** When replacing inlet and outlet lines, ensure to insert supply line into valve port labeled "IN". Ensure plastic lines are not kinked when fountain is reassembled.



Please visit www.murdock.com for most current specifications.



CONTEMPORARY DRINKING FOUNTAINS

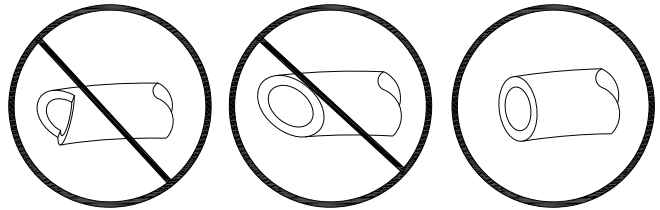
INSTALLATION/MAINTENANCE INSTRUCTIONS

PUSH-IN FITTING INSTALLATION

NOTE: FITTINGS AND TUBE SHOULD BE KEPT CLEAN, BAGGED AND UNDAMAGED PRIOR TO INSTALLATION.

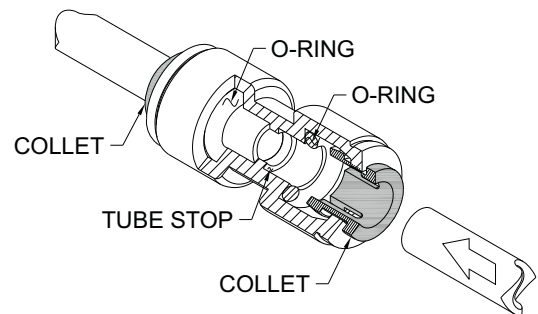
TO CUT TUBE:

Cut to fit length of 1/4" PE tubing and remove any burrs or sharp edges. Ensure that the outside diameter is free from score marks. Tube ends should be square.

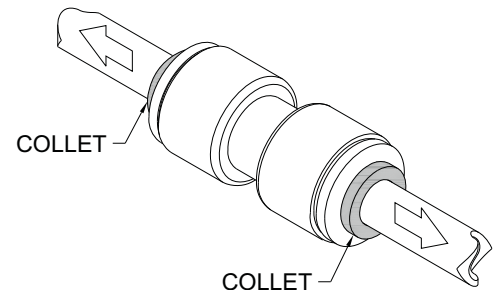


INSERTING THE TUBE:

1. Firmly and fully insert the tubing end into the push-in fitting up to the tube stop located approximately 1/2" deep.

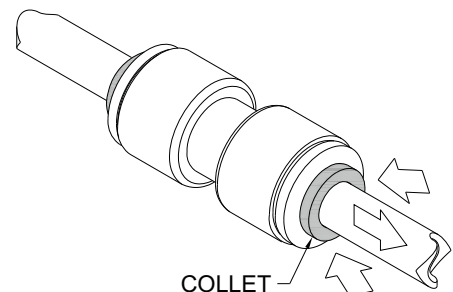


2. Pull on the fitted tubing to ensure it is secure. Tube should not come free from the fitting. Water test the connection assembly prior to leaving the site to ensure there are no leaks.

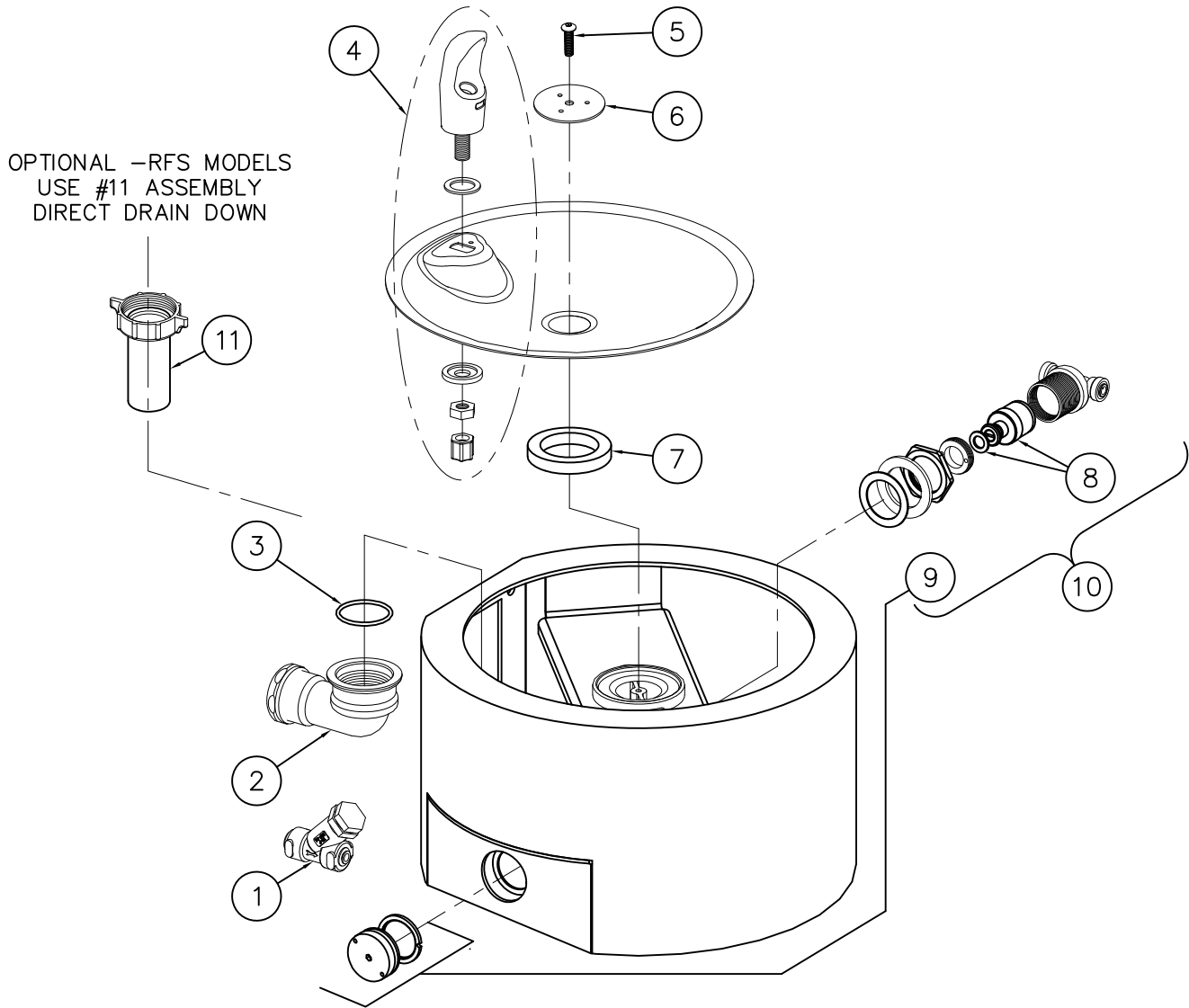


DISCONNECTING THE TUBE:

To disconnect the tube from the fitting ensure that the water line is depressurized. Push collet square towards the push-in fitting body and hold. While holding the collet in, pull on the PE tubing to remove from the push-in fitting.



Please visit www.murdock.com for most current specifications.



1	7000-021-001	"Y" STRAINER	7	7000-006-000	FLAT DRAIN ADAPTER GASKET
2	7000-017-001	ELBOW ASSEMBLY	8	7000-050-001	VALVE CARTRIDGE
3	0401-128-000	O-RING	9	7000-068-001	RETAINING RING AND BUTTON ASSEMBLY
4	7000-012-001	STAINLESS STEEL BUBBLER	10	7000-065-001	RECESSED PUSHBUTTON VALVE ASSEMBLY
5	0112-008-000	1/4"-20 BTN HD CENTER REJECT SCREW	11	7000-032-001	1-1/4" OD x 2-3/4" LONG DRAIN ASSY
6	7007-008-199	STRAINER, PET FOUNTAIN			

ITEM	PART NUMBER	DESCRIPTION	ITEM	PART NUMBER	DESCRIPTION
		MURDOCK-SUPER SECUR TITLE ROUND OUTDOOR STEEL PET FOUNTAIN			
P.O. Box 3527 Industry, CA 91744 15125 Proctor Ave Industry, CA 91746 Phone: (800) 591-9880 www.murdock-supersecur.com		MANUFACTURE DATE JANUARY 2006 TO PRESENT	DATE ISSUED 11/11/05 DATE REVISED 03/22/16	DRAWING NUMBER 9938-149-500	



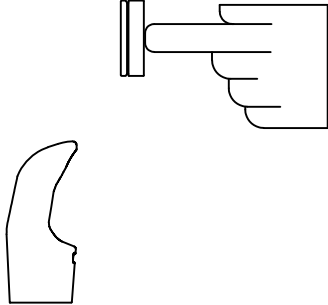
INSTALLATION INSTRUCTIONS

STANDARD PUSH PAD / PUSH BUTTON DRINKING FOUNTAIN

CONDITION:

SOLUTION:

NO WATER FLOW:



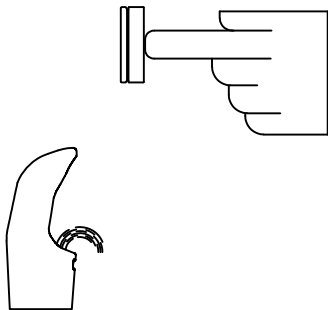
- 1.1 Check water main supply – open.
- 1.2 Inspect stop (by others) – open & no debris.
- 1.3 Inspect in–line strainer for debris – clean.
- 1.4 Replace valve cartridge.

WATER DRIPS / WILL NOT SHUT OFF:




- 2.1 For push pad activated drinking fountains only: Open fixture and move valve bracket assembly further back from push pad.
- 2.2 Replace valve cartridge.

REDUCED WATER FLOW:



- 3.1 Adjust the valve flow rate. See appropriate fixture installation instructions.
- 3.2 Check water main supply for 20 PSIG minimum flow pressure.
- 3.3 Inspect stop (by others) – open & no debris.
- 3.4 Inspect in–line strainer for debris – clean.
- 3.5 Inspect bubbler for debris – clean.
- 3.6 Inspect all tubing for twists or kinks.
- 3.7 Replace valve cartridge.

 <p>MURDOCK–SUPER SECUR P.O. Box 3527 Industry, CA 91744 15125 Proctor Ave Industry, CA 91746 Phone: (800) 591-9880 www.murdock-supersecur.com</p>	<p>TITLE DRINKING FOUNTAIN VALVE MAINTENANCE INSTRUCTIONS</p>		
	<p>MANUFACTURE DATE JANUARY 2006 TO PRESENT</p>	<p>DATE ISSUED 09/28/05</p> <hr/> <p>DATE REVISED 03/02/16</p>	<p>DRAWING NUMBER 9940-200-001</p>